

# CATALOGUE

SEPTEMBER 2023



## GOURMET WOOD

— *something different* —

SPECIALTY TIMBER SAWMILL and MERCHANT

BESPOKE JOINERY SERVICES

# Contents

TIMBER PRODUCTS.....3

LANDSCAPING PRODUCTS .....7

SLABS .....9

## Contact details:

Gourmet Wood  
64 Riverbank Road  
Otaki 5512

Timber enquiries      [sales@gourmetwood.co.nz](mailto:sales@gourmetwood.co.nz)  
0210 448 282

Joinery enquiries      [office@gourmetwood.co.nz](mailto:office@gourmetwood.co.nz)  
027 338 4790

 [www.gourmetwood.co.nz](http://www.gourmetwood.co.nz)

 Gourmet Wood

 gourmet\_wood



**Please note - all prices exclude GST**

# TIMBER PRODUCTS

## Australian Oak timber



- Description:** Used for furniture, flooring, panelling and cabinetry. Nice light-coloured timber which is often hard to source locally. Golden white colour.
- Dimensions and price:** \$17.50 per metre – sawn - ex 150mm x 25mm x (timber length is 3.6 – 4.8m)  
\$20.25 per metre – square dressed – 140mm x 19mm x (timber length is 3.6 – 4.8m)  
\$22.50 per metre – Tongue and groove flooring – 135mm (cover) x 19mm (21mm on request) x (timber length is 3.6 – 4.8m)

## Australian Oak panelling



- Description:** Highly decorative, honey coloured timber. Finished with an interlocking tongue and groove. Uses include decorative wall and ceiling lining and can also be used for soffit linings in sheltered areas (moderately durable).
- Dimensions:** 135mm x 12mm
- Price:** \$22.50 per metre

## Australian Oak sleepers



- Description:** Used for exterior landscaping and bench seats. Could be recut for other purposes.
- Dimensions and price:** 250mm x 125mm x 2.4 = \$165.00 per sleeper  
250mm x 125mm x 2.1 = \$145.00 per sleeper  
190mm x 125mm x 2.4 = \$99.00 per sleeper  
190mm x 125mm x 2.1 = \$89.00 per sleeper  
200mm x 100mm = \$26.00 per metre
- NOTE: 10% discount off total price if entire packet is purchased.

## **Blackwood beams**



**Description:** Rustic heavy hardwood beams. Great for adding design elements into the home. Best used indoors and can be planed, oiled or finished to reveal the rich colour and lust of the timber. Mildly durable, resistant to bugs due to density but is not best used outdoors.

**Story:** These trees were planted on the edge of a forestry block that were designed as a buffer to protect the pine plantation from the elements. Neglected and destined to be bulldozed, these trees developed a tortured grain, due to the neglect they endured, which has resulted in a highly decorative and unique timber.

**Dimensions:** 300mm x 300mm x various lengths (3.2m – 4.2m)

**Price:** \$1,425.00 per beam

## **Blackwood timber**



**Description:** The timber is moderately durable and best suited for indoor use. A great option for flooring due to its density and it's striking appearance. Available as square dressed timber, tongue and groove flooring or panelling.

**Dimensions:** 90mm x 19mm = \$17.50 per metre

140mm x 19mm = \$25.00 per metre

## **Cedar timber**



**Description:** NZ grown western red cedar. Common uses are doors, windows, and weatherboards. Used a lot in Canada for decorative beams.

**NOTE:** Please ask about availability as we currently have limited stock

## Elm timber



**Description:** English elm timber. Common uses are furniture, doors, and kitchens. Historically used for making chariot wheels, due to strong cross grain dimension strength.

**Dimensions** 150mm x 25mm = \$21.00 per metre

**and price:** 150mm x 55mm = \$36.00 per metre

**SAWN** 200mm x 25mm = \$34.00 per metre

220mm x 25mm = \$36.00 per metre

220mm x 35mm = \$40.00 per metre

**Dimensions** 90mm x 19mm = \$20.00 per metre

**and price:** 140mm x 19mm = \$25.00 per metre

**DRESSED** 200mm x 19mm = \$38.00 per metre

## Lawson Cypress timber



**Description:** Durable timber, great for internal and exterior use. Used for decking, pergolas, exterior doors, and weatherboards. Heartwood is a pale golden brown.

**Dimensions:** 150mm x 50mm x 5400mm

**Price:** \$27.50 per metre - dressed

## Macrocarpa timber



**Description:** Durable outdoor/ indoor timber. Highly decorative. Has a large variety of uses from framing, landscaping, pergolas, garden edging or outdoor furniture. Due to being freshly cut, various sizes are available if pre-ordered. Multiple grades (grades 1,2,3) and finishes are available.

**Dimensions** (examples listed below but further sizes are available upon request).

**and price:** 300mm x 300mm = \$250.00 per metre (grade 2)

250mm x 25mm = \$25.00 per metre (grade 2)

150mm x 50mm = \$22.00 per metre (grade 2)

150mm x 25mm = \$11.00 per metre (grade 2)

## Macrocarpa timber - seasoned



<b>Description:</b>	Durable outdoor/ indoor timber. Highly decorative. Has a large variety of uses from framing, landscaping, pergolas, garden edging or outdoor furniture. Indoor uses often are benchtops and bar leaners
<b>Story:</b>	This was a large macrocarpa tree that was felled on a forestry block in Otaki gorge. Trunk was approximately two metres across at the butt. It was retrieved by the NZ Army using a large winch on the back of a LAV as a part of a training exercise.
<b>Dimensions and price:</b>	300 x 150mm x 6m = \$105.00 per metre
	250mm x 75mm x (4.8m – 6mL) = \$45.00 per metre
	200mm x 75mm x (4.8m – 6mL) = \$37.50 per metre
	150mm x 50 x (4.8m – 6mL) = \$20.00 per metre

## Norfolk Pine timber



<b>Description:</b>	Timber is dense and heavy and has a huge variety of character and colour variances within the log. Nicknamed the poor man's Kauri.
<b>Dimensions and price:</b>	140mmx 45mmx 5400mm = \$25.00 per metre – dressed

## **We also have stocks of the following timbers:**

<b>New Zealand-grown Oak</b>	150mm x 50mm = \$30.00 per metre – sawn 215mm x 50mm = \$47.00 per metre – sawn
<b>Wattle / Australian Hickory</b>	150mm x 50mm Please ask about prices and other sizes
<b>Redwood</b>	Please ask about current sizes and prices
<b>Himalayan Cedar</b>	Please ask about current sizes and prices
<b>Recycled Rimu</b>	Please ask about current sizes and prices



# LANDSCAPING PRODUCTS

## Garden stakes



**Description:** Hardwood garden stakes. Perfect for climbing beans, tomatoes, or any general garden purpose. Untreated timber

**Dimensions:** 25mm x 25mm x 1800

**Price:** \$4.50 each or \$35.00 for a bundle of 10x units

## Tree stakes

**Description:** Made from a range of untreated durable timbers. Used to assist trees in establishing their root balls during the first 12-24 months. Due to these being untreated, no chemicals will harm the tree.

**Dimensions:** 50mm x 50mm x 2100mm

50mm x 50mm x 3000mm

**Price:** 2100mm = \$23.50 each

3000mm = \$36.50 each

## Sawdust (big bags)



**Description:** Untreated sawdust of various timbers from our sawmill. Great for gardening or garden paths. Good for suppressing weeds, as well as adding colour and texture to the garden.

**Dimensions:** 1m3

**Price:** \$50.00 - \$20.00 bond on bag (refundable upon return).

## **Sawdust** **(small bags)**



**Description:** Untreated sawdust of various timbers from our sawmill. Great for gardening or garden paths. Good for suppressing weeds, as well as adding colour and texture to the garden.

**Dimensions:** 540mm x 920mm

**Price:** \$11.00 per bag

## **Macrocarpa palings**



**Description:** Suitable for fencing, decking or other landscaping projects. Can be used for weatherboards or flooring or ideally would be great for a chicken coop or treehouse.

**Fencing packs:** Approximately 7 -8m of fencing (depending on gaps)  
Sawn edge - 85mm–150mm width x 25mm thick x 1800mm long = \$750.00 per pack  
Live edge - 150-390mm width x 25mm thick x 1800mm long = \$750.00 per pack

## **Norfolk Pine rings**



**Description:** Norfolk Pine trees are iconic landmarks. Seen commonly throughout New Zealand these trees are seldom used locally but are widely used on Norfolk Island. Used in our joinery shop for bench tops and decorative mantles etc. Timber is dense and heavy and has a huge variety of character and colour variances within the log. Nicknamed the poor man's Kauri.

**Story:** This tree is an example of us making use of a species that is renewable and is often cast aside. Rather than see it rot/ turned into firewood, we want to see it turned into high grade products.

**Dimensions:** 1000mm – 1100mm in diameter, 120mm depth.

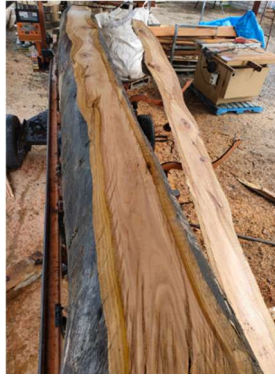
**Price:** \$375.00 – ask for availability

**Optional extras:** +\$100.00 to add steel band, +\$375.00 for individual rings to be planed



# SLABS

## Australian Oak



**Description:** Used for furniture, flooring, panelling and cabinetry. Nice light-coloured timber which is often hard to source locally. Golden white colour

**Dimensions** 550mm x 75mm x 4200mm = \$850.00 per length  
**and price:** 450mm x 50mm x 4200mm = \$550.00 per length  
350mm x 50mm x 4200mm = \$475.00 per length

## Blackwood



**Description:** Blackwood / Acacia NZ grown hardwood. Highly decorative timber and grain due to contrast between sapwood and heartwood. Common uses are benchtops, flooring and furniture. Better suited as an indoor hardwood.

**Story:** Sourced from Dannevirke and was felled to make way for a new subdivision

**Dimensions:** 500mm x 40mm x 1300mm long

**Price:** \$375.00

## Cedar



**Description:** NZ grown western red cedar from 100yo tree. Common uses are doors, windows and weatherboards, however due to the size and shape of these slabs these would make an amazing outdoor table or bar/ benchtop/ shop counter. Extremely durable outdoor timber

**Story:** Sourced from Otaki gorge and this tree was providing far too much shade than the property in question, required.

**Dimensions:** 1100mm x 75mm x 2300mm long

**Price:** \$2,225.00

## Douglas Fir

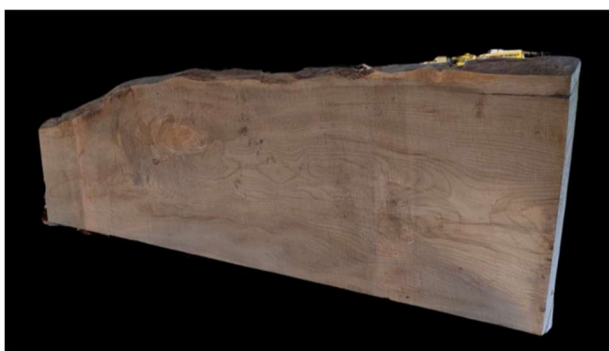


**Description:** A New Zealand classic historically used a lot for framing and timber beams. Has a strong prominent grain and is also naturally durable and stronger than radiata pine. The prominence of the grain often makes it quite polarizing as it appeals to some but can also be overwhelming in some people eyes.

**Dimensions:** 295mm x 85mm x 2440mm

**Price:** \$575.00

## Elm



**Description:** English elm slabs from 150yo tree. Common uses are furniture, doors, and kitchens. Historically used for making chariot wheels, due to strong cross grain dimension strength.

**Story:** Fell on my uncle's garage, narrowly missing his caravan, salvaged it to turn into wood products, rather than see it become firewood.

**Dimensions** 600mm – 800mm in width x 75mm depth x 2200mm long = \$925.00

**and price:**

600mm – 900mm in width x 75mm depth x 4900mm long = \$2,050.00

## Japanese Cedar



**Description:** Light reddish-brown timber, naturally durable and used a lot in Japan for weatherboards, framing, furniture making and for cultural pieces.

**Dimensions:** Multiple pieces currently available of varying sizes.

**Price:** Individual pieces are priced in slab index at back of catalogue

## Jarrah



**Description:** An Australian hardwood that is both incredible heavy and dense. Suitable for in ground and above ground uses. Has a rich red/ brown colour, especially when polished.

**Dimensions:** 215mm x 50mm x 670mm

**Price:** \$45.00 per length

## Leyland Cypress



**Description:** Mix of yellow cedar and macrocarpa, this timber has similar durability properties to macrocarpa and is often grown in hedge rows on farms as shelter belts. The golden yellow colouring of the timber differentiates it from macrocarpa but the similarity in properties means it holds an equally large variety of use cases.

**Dimensions:** Multiple pieces currently available of varying sizes.  
Ranging from (150mm – 360mm) W x (23mm – 85mm) D x (800mm – 3200mm) L

**Price:** Individual pieces are priced in slab index at back of catalogue

## Macrocarpa



**Description:** A durable golden-brown timber that has a variety of uses including weatherboards, exterior framing, landscaping products and interior features such as benchtops and panelling. Great “all-rounder” variety of wood. Not suitable for in-ground use.

**Dimensions:** Multiple pieces currently available of varying sizes.  
Ranging from (220mm – 520mm) W x (35mm – 90mm) D x (500mm – 2550mm) L

**Price:** Individual pieces are priced in slab index at back of catalogue

## Matai



**Description:** NZ native that consists of a rich reddish-brown heartwood and pale white-gold sapwood. Predominantly used for flooring, furniture and benchtops but also has strong structural properties and was historically used for beams and water-tank supports

**NOTE:** Please ask about availability as we do not get a lot of this timber

## Norfolk Pine



**Description:** Timber is dense and heavy and has a huge variety of character and colour variances within the log. Nicknamed the poor man's Kauri these pieces would be ideal for breakfast bars, dining tables or other large pieces, due to the width of the log these slabs are cut from

**Dimensions:** 875mm x 75mm x 3200mm = \$1,425.00

750mm x 75mm x 3200mm = \$1,350.00

650mm x 75mm x 3200mm = \$1,025.00

**Price:** Individual pieces are priced in slab index at back of catalogue

## Pohutukawa



**Description:** A classic NZ native, often found in coastal areas. Pohutukawa is used for steam bending, boat building and furniture. Highly decorative grain, very hard and heavy timber.

**NOTE:** Please ask about availability as we do not get a lot of this timber

## Rata



**Description:** A heavy, hard, and dark, NZ native that is reddish brown in colour. On occasion the heartwood can contain a streak of purple and can be almost plum coloured. The twisted nature of how the trunk grows can give the timber a distorted look.

**Dimensions:** Multiple pieces currently available of varying sizes.

**Price:** Individual pieces are priced in slab index at back of catalogue



## **Red Beech**



**Description:** A heavy and dense NZ hardwood that is often used for flooring. Also used for built-in furniture, internal joinery and panelling. It is a very stable in nature which is great for ensuring its finished product stays true to the original design

**Dimensions:** 600mm x 100mm x 1200mm

**Price:** \$675.00

## **Rewa Rewa**



**Description:** A highly decorative grain with a luminous fleck throughout. This classic NZ native is often used for inlay work on high end pieces of furniture, due to its lustre.

**Dimensions:** 340mm x 37mm x 1800mm

**Price:** \$250.00

## **Recycled Rimu**



**Description:** A New Zealand icon, this timber is famous for historically being used for a lot of New Zealand's aging housing stock. It has a long straight grain and consists of both golden sapwood and rich brown heartwood. Used for furniture, benchtops, interior panelling and veneers

**Dimensions:** Multiple pieces currently available of varying sizes.

Ranging from (170mm – 460mm) W x (25mm – 100mm) D x (910mm – 1300mm) L

**Price:** Individual pieces are priced in slab index at back of catalogue



## Spotted Gum



**Description:** An Australian hardwood used throughout NZ as telegraph poles. Extremely durable heartwood is used for interior and exterior beams and now commonly used for decking, cladding and outdoor furniture.

**Dimensions and price:** Ask about availability

## Totara



**Description:** A NZ native softwood which has a reddish-brown heartwood and a pale pink sapwood. It has fine even straight grain and is highly durable. Historically it was used a lot for window and door sills due to its high rot resistance and was a favourite for use in building Waka as it's easily worked by hand.

**Dimensions and price:** 530mm x 100mm x 530mm = \$125.00  
480mm x 100mm x 510mm = \$125.00

## Tulip



**Description:** Otherwise known as Tulip Oak, has a pale white / grey colour, giving a washed out and prematurely aged look. Ideal for furniture and decorative pieces.

**NOTE:** Please ask about availability as we do not get a lot of this timber

<b>GW number</b>	<b>Species</b>	<b>PLU number</b>	<b>Length (mm)</b>	<b>Width (mm)</b>	<b>Depth (mm)</b>	<b>Cubic Metre</b>	<b>Price (inc GST)</b>
93	<b>Aust hardwood</b>	AUS093	950	310	65	0.019	<b>202.17</b>
16	<b>Douglas Fir</b>	DOU016	2440	295	85	0.061	<b>626.60</b>
50	<b>Elm</b>	ELM050	2180	240	50	0.026	<b>293.03</b>
96	<b>Elm</b>	ELM096	1310	500	75	0.049	<b>471.67</b>
2	<b>Japanese Cedar</b>	JAP002	1100	250	45	0.012	<b>108.92</b>
1	<b>Japanese Cedar</b>	JAP001	1400	250	40	0.014	<b>123.22</b>
49	<b>Japanese Cedar</b>	JAP049	1500	420	50	0.032	<b>443.58</b>
45	<b>Japanese Cedar</b>	JAP045	1630	230	75	0.028	<b>346.46</b>
3	<b>Japanese Cedar</b>	JAP003	1800	250	50	0.023	<b>277.24</b>
22	<b>Japanese Cedar</b>	JAP022	2170	150	35	0.011	<b>140.38</b>
4	<b>Japanese Cedar</b>	JAP004	2400	450	50	0.054	<b>760.43</b>
95	<b>Japanese Cedar</b>	JAP095	2540	380	40	0.039	<b>543.68</b>
5	<b>Japanese Cedar</b>	JAP005	3500	350	35	0.043	<b>603.76</b>
77	<b>Leyland Cypress</b>	LEY077	680	450	100	0.031	<b>204.38</b>
74	<b>Leyland Cypress</b>	LEY074	720	330	105	0.025	<b>166.63</b>
68	<b>Leyland Cypress</b>	LEY068	800	200	120	0.019	<b>106.87</b>
67	<b>Leyland Cypress</b>	LEY067	870	210	65	0.012	<b>66.10</b>
78	<b>Leyland Cypress</b>	LEY078	910	400	45	0.016	<b>109.41</b>
52	<b>Leyland Cypress</b>	LEY052	960	220	35	0.007	<b>41.14</b>
76	<b>Leyland Cypress</b>	LEY076	1000	200	70	0.014	<b>77.92</b>
33	<b>Leyland Cypress</b>	LEY033	1000	270	75	0.020	<b>112.71</b>
90	<b>Leyland Cypress</b>	LEY090	1000	430	45	0.019	<b>129.24</b>
79	<b>Leyland Cypress</b>	LEY079	1015	180	75	0.014	<b>76.27</b>
75	<b>Leyland Cypress</b>	LEY075	1015	190	75	0.014	<b>80.51</b>
86	<b>Leyland Cypress</b>	LEY086	1490	350	90	0.047	<b>313.49</b>
63	<b>Leyland Cypress</b>	LEY063	1500	340	80	0.041	<b>363.35</b>
57	<b>Leyland Cypress</b>	LEY057	1530	260	25	0.010	<b>77.50</b>
91	<b>Leyland Cypress</b>	LEY091	1530	280	85	0.036	<b>283.75</b>
40	<b>Leyland Cypress</b>	LEY040	1550	360	85	0.047	<b>422.39</b>
29	<b>Leyland Cypress</b>	LEY029	1560	170	40	0.011	<b>82.66</b>
27	<b>Leyland Cypress</b>	LEY027	1580	210	35	0.012	<b>90.49</b>
82	<b>Leyland Cypress</b>	LEY082	1600	450	40	0.029	<b>256.48</b>
28	<b>Leyland Cypress</b>	LEY028	1720	160	23	0.006	<b>49.32</b>
61	<b>Leyland Cypress</b>	LEY061	1720	190	85	0.028	<b>216.46</b>
30	<b>Leyland Cypress</b>	LEY030	1780	210	40	0.015	<b>116.51</b>
48	<b>Leyland Cypress</b>	LEY048	2000	200	35	0.014	<b>109.09</b>
59	<b>Leyland Cypress</b>	LEY059	2030	210	40	0.017	<b>132.88</b>
23	<b>Leyland Cypress</b>	LEY023	2140	200	47	0.020	<b>156.75</b>
44	<b>Leyland Cypress</b>	LEY044	2265	180	35	0.014	<b>111.19</b>
65	<b>Leyland Cypress</b>	LEY065	2300	300	40	0.028	<b>245.79</b>
64	<b>Leyland Cypress</b>	LEY064	2460	350	45	0.039	<b>345.05</b>
69	<b>Macrocarpa</b>	MAC069	630	240	75	0.011	<b>63.12</b>
73	<b>Macrocarpa</b>	MAC073	690	520	90	0.032	<b>215.68</b>
94	<b>Macrocarpa</b>	MAC094	700	350	45	0.011	<b>73.64</b>

84	<b>Macrocarpa</b>	MAC084	710	290	50	0.010	<b>57.30</b>
83	<b>Macrocarpa</b>	MAC083	710	350	50	0.012	<b>82.99</b>
37	<b>Macrocarpa</b>	MAC037	800	490	85	0.033	<b>222.55</b>
56	<b>Macrocarpa</b>	MAC056	803	220	45	0.008	<b>44.25</b>
54	<b>Macrocarpa</b>	MAC054	820	330	45	0.012	<b>81.33</b>
58	<b>Macrocarpa</b>	MAC058	1000	300	30	0.009	<b>60.11</b>
87	<b>Macrocarpa</b>	MAC087	1030	280	55	0.016	<b>88.29</b>
42	<b>Macrocarpa</b>	MAC042	1070	280	50	0.015	<b>83.38</b>
20	<b>Macrocarpa</b>	MAC020	1200	310	50	0.019	<b>124.23</b>
46	<b>Macrocarpa</b>	MAC046	1200	430	85	0.044	<b>292.95</b>
34	<b>Macrocarpa</b>	MAC034	1200	460	70	0.039	<b>258.08</b>
39	<b>Macrocarpa</b>	MAC039	1300	315	75	0.031	<b>170.95</b>
85	<b>Macrocarpa</b>	MAC085	1340				
21	<b>Macrocarpa</b>	MAC021	1610	400	33	0.021	<b>189.26</b>
6	<b>Macrocarpa</b>	MAC006	1650	500	35	0.029	<b>257.15</b>
7	<b>Macrocarpa</b>	MAC007	1850	400	35	0.026	<b>230.66</b>
38	<b>Macrocarpa</b>	MAC038	2150	520	70	0.078	<b>696.95</b>
9	<b>Macrocarpa</b>	MAC009	2200	400	40	0.035	<b>313.48</b>
11	<b>Macrocarpa</b>	MAC011	2200	400	40	0.035	<b>313.48</b>
8	<b>Macrocarpa</b>	MAC008	2300	300	40	0.028	<b>245.79</b>
12	<b>Macrocarpa</b>	MAC012	2300	400	55	0.051	<b>450.62</b>
10	<b>Macrocarpa</b>	MAC010	2470	300	50	0.037	<b>329.95</b>
26	<b>Macrocarpa</b>	MAC026	2550	450	45	0.052	<b>459.86</b>
19	<b>Macrocarpa</b>	MAC019	2570	470	33	0.040	<b>354.98</b>
17	<b>Macrocarpa</b>	MAC017	3100	250	75	0.058	<b>452.93</b>
43	<b>Matai</b>	MAT043	1500	260	100	0.039	<b>493.84</b>
80	<b>Rata</b>	RAT080	900	320	40	0.012	<b>115.42</b>
36	<b>Red Beech</b>	RED036	1200	600	100	0.072	<b>721.35</b>
47	<b>Red Beech</b>	RED047	1200	600	100	0.072	<b>721.35</b>
31	<b>Rewa Rewa</b>	REW031	1800	340	37	0.023	<b>240.62</b>
32	<b>Rewa Rewa</b>	REW032	1800	340	37	0.023	<b>240.62</b>
51	<b>Rimu</b>	RIM051	910	320	50	0.015	<b>145.87</b>
41	<b>Rimu</b>	RIM041	1150	320	100	0.037	<b>368.69</b>
55	<b>Rimu</b>	RIM055	1210	170	25	0.005	<b>42.93</b>
35	<b>Rimu</b>	RIM035	1230	460	90	0.051	<b>510.18</b>
42	<b>Rimu</b>	RIM042	1300	400	40	0.021	<b>208.39</b>
98	<b>Rimu</b>	RIM098	1150	305	100	0.035	<b>351.41</b>
99	<b>Rimu</b>	RIM099	1405	365	55	0.028	<b>282.58</b>
100	<b>Rimu</b>	RIM100	1500	420	25	0.016	<b>210.39</b>
13	<b>Tulip</b>	TUL013	1850	500	40	0.037	<b>411.88</b>
14	<b>Tulip</b>	TUL014	1850	500	40	0.037	<b>411.88</b>
15	<b>Tulip</b>	TUL015	1850	650	45	0.054	<b>602.38</b>
89	<b>Tulip</b>	TUL089	1870	300	45	0.025	<b>281.03</b>

GW number	Species	PLU number	Length (mm)	Width (mm)	Depth (mm)	Cubic Metre	Price (inc GST)
C-6	Jarrah	JAR006C	670	215	55	0.008	<b>66.15</b>
C-7	Jarrah	JAR007C	670	210	45	0.006	<b>52.86</b>
C-4	Macrocarpa	MAC004C	1030	300	45	0.014	<b>92.87</b>
C-5	Macrocarpa	MAC005C	480	250	75	0.009	<b>50.09</b>
C-3	Rimu	RIM003C	400	360	150	0.022	<b>216.41</b>
C-8	Rimu	RIM008C	810	270	55	0.012	<b>100.43</b>
C-9	Rimu	RIM009C	840	260	55	0.012	<b>100.29</b>
C-10	Rimu	RIM010C	420	340	50	0.007	<b>71.53</b>
C-11	Rimu	RIM011C	1020	160	50	0.008	<b>68.13</b>
C-12	Rimu	RIM012C	830	180	60	0.009	<b>74.84</b>
C-1	Totara	TOT001C	510	480	100	0.024	<b>245.26</b>
C-2	Totara	TOT002C	530	530	100	0.028	<b>281.43</b>