



*Kapiti Woodworkers Guild Inc.*



***CELEBRATING 25 YEARS***

***25th SEPTEMBER 2022***

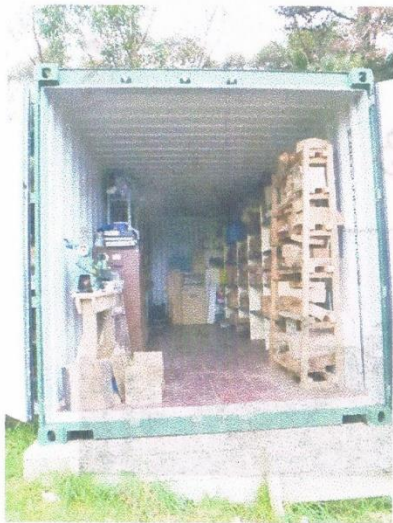
***Record of the last five years***

***2017—2022***



The last five years have been eventful for the Guild. We have successfully negotiated our way through the Covid 19 pandemic and re-located our activities to the MeNZshed in Waikanae Beach and are currently rebuilding our membership strength.

In 2019 we realised that the Guild had considerable stores of timber that had been donated over the years but these were distributed at various locations primarily in member's garages and sheds. The Guild also had numerous boxes of old records of meetings that re-



*The container stacked with wood*

quired consolidating and organising. It was agreed that all this material should be held in one location. The President at the time, Ian Pratt, was also a member of the Waikanae MeNZshed so an arrangement was negotiated that we would purchase a 20-foot shipping container that would be located on the grounds of the MeNZshed. The container was fitted with shelving and subsequently an external lean-to was added to accommodate wet wood.

Meanwhile the Expressway north of Paraparaumu was constructed to pass quite close to the MeNZshed premises and a survey of member's addresses showed that most lived in Waikanae and north at Otaki and Levin so in terms of ease of access it made sense to move our meetings from Scot's Hall in Raumati Beach to the MeNZshed in Waikanae Beach. The MeNZshed had recently completed a meeting room with comprehensive AV facilities which they were prepared to let us use without charge so in September 2021 we began to hold our monthly meetings there. The only drawback to this move is that the neighbours have prevented us from having evening meetings so we have moved our meeting time to Saturday afternoons. Negotiations to allow evening meetings to resume are ongoing.





*New MenZshed building*

Another innovation during this period has been to hold committee meetings over the internet which has saved considerable time and resources travelling to a single location.

### **Our commitments to charity**

We have continued our long tradition to supply wooden bowls filled with sweets to the Mary Potter Hospice and the Cancer Society at Christmas and to make wig blocks for recovering cancer patients through the 'Look good—feel better' charity. Recently Don McWhirter has been making red tulips in response to a request from the Parkinson's Society. Parkinson's Disease is a fast growing neurological condition and the Society currently receives no Government support so the sale of these items is an important source of funds.



*Marquee at the Strawberry festival*



*Red poppies for the Parkinson's Society*

Members of the Guild have also regularly attended at the Strawberry Festival organised as a fundraiser by Mary Potter Hospice where we offer work for sale and delight children by making and giving away spinning tops. The Guild now has two fully equipped midi lathes so our productivity could be doubled in the future.

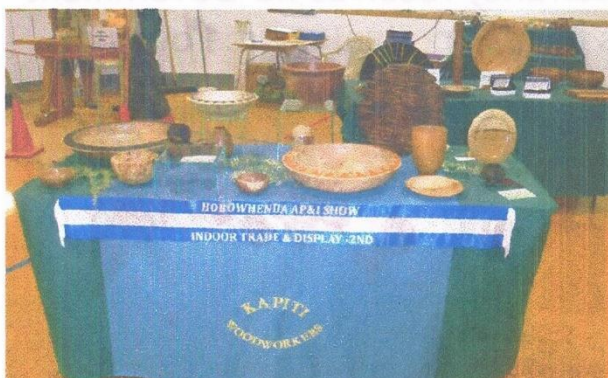


## Exhibitions

There has been some disruption to events over recent years due to Covid 19 but when opportunities have been available we have successfully presented work for sale at the Kapiti Arts Trail and the Levin A & P Show. These are also opportunities to recruit new members from the public. Recently we have also been guest exhibitors at month-long exhibitions at the Kapiti Arts and Crafts Society's gallery thanks to Andrea Mark who has facilitated the arrangement.



*Display tables at the KACS exhibition*



*2nd prize winner at  
the Levin A & P show*

The Manawatu Open Day has also been subjected to cancellation at short notice due the pandemic but in 2019 we won the Colt Trophy for turning and in 2021 the Drew Cup for the best display table.

*2021 prize-winning table*





In 2021 the competition rules were changed so that teams of six from each Guild were required to use a limited amount of timber to make a completed piece within six hours. This allowed imaginations to run wild. Kapiti's contribution was a fantasy insect which did not win but provided considerable entertainment.



*Insectus fantasticus Kapiti*

### **Guild meetings**

We have had to cancel a few meetings due to the pandemic but generally the program has gone ahead. Over this time we have heard from many of our own members whose special skills and passions they are willing to share with the rest of the group. We have also had a variety of outside speakers many of them makers of superb musical instruments—harps, guitars, violins and a pipe organ and Taiko drums. Carvers of bone, Oamaru stone and wood have shown us their work. Our furniture makers showed off some of their work. We had hands-on practice with pyrography and decoration with a Dremel and a demonstration of glassblowing together with afternoons when members showed jigs they had made for specific projects.

NAW organised a tour by Australian wood turner Neil Turner who showed us the carving he does on his turned pieces.

We currently have three 'Home Groups' - the Village Group based in Levin, the Torrance Group in Otaki and the Ratanui Group in Wai-



kanae. These are good opportunities to discuss problems and compare approaches. They also provide a chance to share skills and equipment.

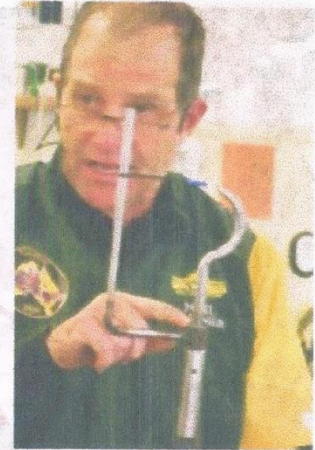
### **Some of our speakers**



Hugh Mill—pen turner



Paul Murton—clockmaker



Neil Turner—  
Australian woodturner



Charlotte Stokes—glassblower

Peter  
Madill—  
stringed  
instru-  
ment  
maker



Ron  
McNulty—  
recorder  
maker



## ROLL OF HONOUR

Guild office holders over the last five years.

- **PRESIDENT**

Ian Pratt (2018, 2019); Tim Allsop (2020, 2021);  
Quentin Christie (2022)

- **SECRETARY**

Tim Allsop (2018, 2019); Gwyneth Evans (2020, 2021, 2022)

- **TREASURER**

Clive Williams (2018, 2019, 2020, 2021, 2022)

Special thanks to Glenis Chapman who has rescued the Guild's website from oblivion and made it a useful resource for all members (see the next page).

Also thanks to James Gellen who reliably produces the monthly Lancewood from unreliable material provided by the rest of us.

Thanks also to all the members who have turned up for working bees, who have made wig stands and gift bowls, who have encouraged buyers at our exhibitions and who have come along to meetings on Saturday afternoons.





Our website  
<http://www.kwwg.org.nz>