

*Kapiti Woodworkers Guild Inc.*



**CELEBRATING 20 YEARS**

**16th SEPTEMBER 2017**

**Welcome to the**  
**Kapiti Woodworkers Guild**  
**20<sup>th</sup> Anniversary dinner**

- 6:00pm Gather & put pieces on the display table & chat
  - 6:30pm Welcome by Guild President Derek Hemming
  - Toast to absent friends
  - Dinner First Course
  - Outline of Guild History
  - Special Presentation
  - Dinner Main Course
  - Guest Speakers: Pam Stapleton & Nigel Bishop  
"Our Antarctic Adventure"
  - Dessert, Coffee & Cake
  - Thanks & closing remarks
- 

*Special message from the National Association of Woodworkers:*

"On behalf of the NAW I would like to congratulate the Kapiti Woodworkers Guild on celebrating their 20<sup>th</sup> anniversary. I hope your celebration is a success and that your Guild goes from strength to strength in the future."

*Geoff Addison, President, NAW.*

---

*Editors note: I tried hard to get it all right, but apologies to anyone where I got details wrong, or omitted anything, in the preparation of this history. The old memory ain't what it used to be!! J.L.*

## THE EARLY YEARS *A GREAT FOUNDATION*

Our guild has its beginnings in mid 1997 with a discussion amongst NAW committee members who thought there may be a space for a woodworking club between the two established clubs in Wellington and Palmerston North. A small number of woodturners from the Kapiti area were already members of the Wellington club and were regular attendees at the periodic demonstrations at The Woodturning Shop, then in Jackson St, in Petone. (Most notably, John Simons, Frank Torrance, John Wooton and professional craft turners Tony and Gillian van Raalte.)

A phone call from Athol Swann, of the Guild of Woodworkers Wellington, (wearing his NAW committee hat,) to John Simons and Frank Torrance saw a display and demonstration set up by the Manawatu Woodworkers Guild at Coastlands on Saturday 16<sup>th</sup> of August at which



*NAW/Manawatu club display at Coastlands*

several pages of hand written names and phone numbers were taken of anyone who showed an interest and subsequently all of these people were phoned and invited to an initial meeting to discuss setting up a club in Kapiti.



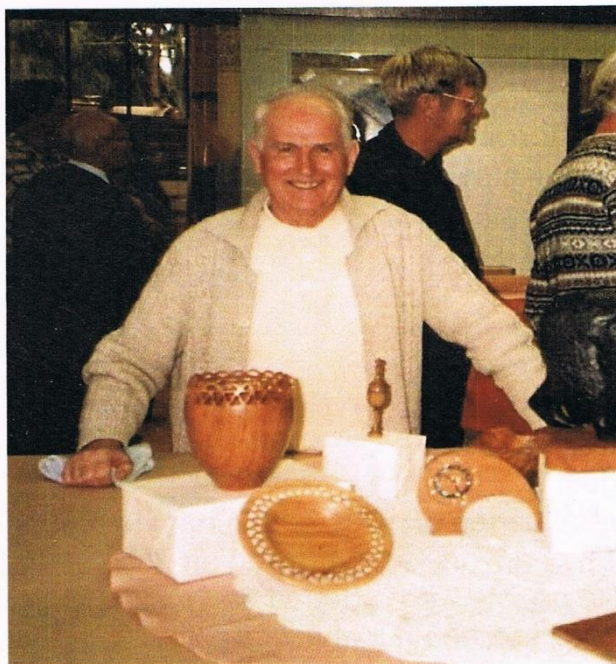
This first meeting, held at the Kapiti Arts & Crafts Society (K.A.C.) rooms in Matai Road on Tuesday 9<sup>th</sup> of September 1997, was hosted by Bruce Oliver and Bill Glavin who were members of a small woodcarving group attached to the K.A.C Society.

35 people attended that meeting, including, from the Manawatu guild, Graeme Guy (President of NAW), Don Tijiens ( Secretary of NAW), and Maurice Moffat (President of the Manawatu guild), with an apology from Roy Miers.

Bruce Oliver welcomed everyone and introduced John Simons who opened the meeting and explained the idea to set up a local club for interested woodworkers. To quote from a later report on the minutes of that meeting... " by the interest shown this evening it is clear there is support for a guild in this community." said Mr Simons, "It was resolved unanimously that a guild for the Kapiti district be formed." ( Moved by John Wooton, seconded by Rob Waanders.)

24 of those attending that meeting subsequently signed up as members of that guild and several others joined, making up the 29 on the inaugural membership list.

The first committee meeting was held on



*President John Simons with our first Manawatu Open Day entry*

14<sup>th</sup> October 1997 at Frank Torrance's house in Waikanae with the "steering Committee" of mrsers Simons, Arthurs, Barron, Glavin, Jackson, Manser, Oliver, Smith & Torrance. It was resolved to begin to prepare a constitution and a logo. An election of Officers saw John Simons take the chair, Frank Torrance as Secretary and "no offers" for the post of Treasurer, "Committee to appoint". The remainder present were appointed to the committee. Subs were set at \$25.

The first guild meeting proper was held at the K.A.C. On 21<sup>st</sup> October with Jack Fry from Conservation Supplies ( and a stalwart Wellington Guild member,) as guest speaker talking about finishes and finishing.



*American Ambassador & wife talk to John Simons & Tom O'Sullivan about the Ambassador's collection of walking sticks*

The guild began to grow from there and many of our now established features saw their beginnings. With around 30 members attending most of the early meetings, by the February 1998 meeting there was an "I made it" table. It had been decided to Incorporate the Guild and a draft constitution and Articles of Incorporation were presented to the March meeting and it was "resolved to adopt without dissent".

By April there was an arrangement for regular workshop visits



and at the same meeting a very surprised Jim Lowe won an NAW sponsored prize for the youngest member ( a prize he could not hope to win today!) The logo, designed by Shirley Arthurs' brother Ron Wemyss, was approved and at the suggestion of John Simons the (then) printed newsletter was named "Lancewood", of which there were initially 3 copies a year given out at meetings.

arts/crafts

## Woodworkers guild formed

The creative horizon of Kapiti Coast expanded further with the formation of the Kapiti Woodworkers Guild.

The guild hopes to encourage the development of individual creativity and provide a forum whereby members of the guild can share skills, knowledge and facilities for those interested in woodwork and related fields.

The local guild was formed after a recent demonstration and display organised at Coastlands by the Manawatu Woodworkers Guild. An inaugural meeting of the Kapiti guild with the support of the Manawatu and Wellington guilds attracted 35 people.

Last week's meeting saw a turnout of 53 people. Guest speaker was nationally known expert in wood preservation Mr John Fry. Proposed activities include demonstrations, visits to members workshops, guest speakers and annual displays.

Membership is open to all with meetings held at the Kapiti Art and Crafts rooms in Matai Road on the 3rd Tuesday of every month. They meet at 7pm for a social spell before kicking off the meeting at 7.30pm.

For further information on the guild call guild president Mr John Simons at Tel: 298 8987 or Frank Torrance at Tel: 293 7514.



**John Simons and guild member Christine Marshall work on a piece to be exhibited at the November meeting.**

The Guild was off to a solid start.

## FORGING AHEAD

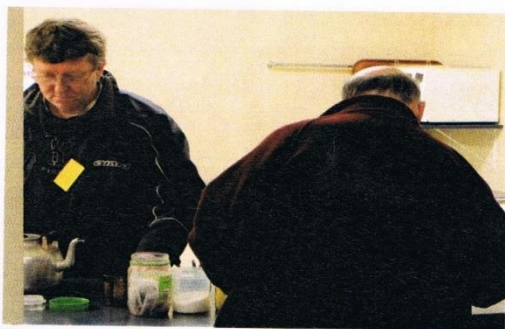
### *The ups & downs of club life.*

The first AGM was held at the K.A.C. On 19<sup>th</sup> May 1998. Membership was up to 54 and the meeting was attended by 38 brave souls.

The first year's accounts set the tone for our responsible financial stewardship. From an income of \$1415, we expended \$1048.91, with an excess of \$402.09 keeping our fledgling guild in the black, although this didn't come without some controversy.....

The May committee meeting had resolved to propose to the upcoming AGM to either raise the subs to \$30, or to charge 50c per head for tea money at the meetings. After much discussion it was moved at the AGM to increase subs to \$30 *including teas*, (passed). A subsequent amendment which proposed \$25 subs plus 50c for teas was lost, however then a further amendment that subs be \$30 *plus* a charge of 50c for teas at meetings was carried.

However there is an amusing and interesting footnote. Committee minutes record initially that the "honesty box" system was "well received and balanced with the attendances" however by March 1999, a year later, membership secretary



*The every faithful John Morley serving our cuppa*

Ernie Manser was reporting to committee about the "seemingly low return from tea money."

At the 1998 AGM Alan Watt offered to fill the vacant Treasurers position and after the meeting Jim Lowe was co-opted onto the committee, filling the vacant VP role.



Early meetings were a mixture of outside guest speakers, informal in-house panels and demonstrations of various subjects.

At the May 1999 AGM subs were increased to \$35 (\$30 for early payment, but with no mention of tea money) and membership was up to 66. As early as 1999 we were having discussions with the K.A.C. about a possible addition to their premises to cater for us, as there was some negative feedback about the dust we made at demonstrations, the hassles of bringing in a lathe and everything that went with it and issues with the alarm that set itself automatically at 9:30pm! ( Later, in September 2008 we approached the Council with a view to take over the adjacent Red Cross rooms which we had heard were to become vacant. We got turned down there, ("the building contains asbestos") but the hall was subsequently given over to Senior Net.) Meanwhile, by August 1999, after looking at several alternatives, we had decided to move our meetings to the Scots Hall in Raumati where we remain today.

It had been decided that not many were likely to attend a January meeting during the holidays so a purely social event, our first January BBQ was held at the K.A.C. Grounds on *Tuesday 19<sup>th</sup>* January with 45 members and family attending.



*Shirley Arthurs & Lewis Morrison picnicing at the Watt's*

Such a popular



event deserved annual status and since then the BBQs have been held every year in various venues including: K.A.C , Scots Hall, Otaihangā Domain, The Rohde residence in Otaki, The Watts in Paraparaumu and latterly at "Chez Gaffeny" in Waikanae. Although attendance has waxed and waned since that first get-together, it still remains a popular and enjoyable social event on the Guild calendar.

Early in 2000 The Woodturning Shop in Jackson St. Petone was purchased by Jim & Claire Lowe to add to their retail and



*The first gathering at the new Woodturning Shop*

manufacturing business at Lindale. Initially TWS shifted to Epiha St. beside the Paraparaumu railway station and the attached workshop quickly became a gathering place for the club when

Jim added on an area as a turning school, however this symbiotic relationship really blossomed two years later when TWS shifted to bigger, brighter premises at Lindale. The school and workshop areas there grew into something of a pseudo 'club rooms' with monthly demos & training sessions, classes, visiting national & international turners, several masterclasses and the likes of cancer bowls working days and just plain "turning days" being regular features. Many club members became students when Jim took on the Aoraki Certificate in Woodturning course and vice-versa, with many of the new course students joining up with the guild. And who can forget the great "Big Day In" annual event with the club supporting and rocking up to take a full part.

In 2003 we dabbled with an email newsletter, but after initial problems this was dropped until being taken up fully again a few years later.

In September 2007 we celebrated our 10<sup>th</sup> anniversary with a very social dinner and movie at Cohaven in Otaki. The evening was recorded as a great success with the 83 attending also being witness to the first presentation of the President's Trophy, awarded to Phil Quinn. The trophy is for "Outstanding effort in furthering growth & development in woodturning".



*The "Torrance" Group; L to R - John Debney, Keith Bradbury, Frank Torrance, Geoff Greenfield, Brian Arthurs, John Eason, Bill Parkinson, Ron Day, Don Culling, Ernie Manser, Gordon Shand.*

Other trophy winners have been: John Wysoki, Don Hophirk, Bill Parkinson, Russell Barnes, John Talbot, Geoff Greenfield, Graeme McIntyre, Tim Allsop & Roy Miers.

Membership around this time was about 75, which was down from a high of just over 100 in 2003 including many women. We are not alone as a club in seeing our membership slowly declining over the years and as noted earlier, with Jim's prize for being the youngest member, much of our attrition is, sadly, losing members through passing away. Younger members are hard to come by but must remain a focus to ensure our future.



## OUT AND ABOUT

*Us out in our community*

Our first foray out in the wider community was a demonstration and sales table in the foyer of Placemakers on 5<sup>th</sup> December 1998. At the last minute we added a sausage sizzle and the day was reported as being successful and encouraged us to look at other opportunities, especially to promote our member's work and to offer sales opportunities for them. We returned to Coastlands with successful sales displays in November 1999 and October 2000.

Many such sales outings (some also with a capacity to set up a club lathe and demonstrate,) have come up over the years, including; The Camellia Society, Trentham Racecourse, The Caledonian Society, Levin Mall, Levin A&P show (where we also won an award for best commercial display!) the Dean Room at Paraparaumu Library and at the Levin and Waikanae Libraries.



*Trentham Racecourse*



*Winning stand at Levin A&P show*

2008 also saw us try out a short lived 'pop-up' shop at Hyde Park. For many of these efforts we owe thanks to John Wysoki who never misses an opportunity and always invites us to take part.

In addition to these random outings we have a long and solid history with the Kapiti Arts Trail. Our first, small, test of these waters was in October 2001 in the library and veranda of the Kapiti School in Rimu Road. Over subsequent years we moved to the Kapiti Community Centre, radically upscaled in 2004 with our display , together with a small group of painters, spinners &



*Part of our Arts Trail effort at the Waikanae Hall*

weavers, and with various partner's efforts filling out the Waikanae Memorial Hall. For 3 years we were able to fill this venue, ( well, at least the half that wasn't filled with the ever irrepressable Gordon Shand's magical toys and miscellaneous creations!) until, after reduced foot traffic, we joined an artists' hub at Whitirea Polytech on Kapiti Road. Last year we began a joint venture with Big Mac slabs.

The Arts Trail, in terms of sales, has always been up & down, but it has always been great opportunity to be out showing our community what we produce.



As well as these pecuniary ventures we also have a proud history, (which we are actually not very good at crowing about,) of using our skills to support worthy causes where we can.

As early as Christmas 1999 we were donating toys to the Salvation Army, adding Birthright in 2000 and later the local foodbank.

Once again, this became a tradition that grew and blossomed and around 2005 John Wysoki came to the committee suggesting



*The Frank Torrance home group with toys ready to donate*

that we make small bowls and fill them with chocolates (donated by way of his daughter who worked in sales for Cadbury) to donate to the local Cancer society for their patients at Christmas. The project was such a success for both us and the recipients that we later added the local Mary Potter Hospice. Thanks mostly to John's badgering ( and of course some amazing efforts by all the guys & gals), at it's height we were making and donating around 170 bowls annually. As membership diminishes however (and we lost the free chocolate supply,) we are down to about 140 a year. Still, 12 years of continuous giving is an amazing effort from our small group.

Another perennial of our altruistic efforts is our involvement with making wig stands for the Cancer Society in conjunction with the charity 'Look Good – Feel Better'. Stemming from a project by the Waikato Woodturning Club, in 2007 we began to make wig stands for cancer patients who lose their hair during treatments.

Our contact through 'Look Good – Feel Better' Leigh Renai,

does amazing work, but tragically needs around 200 stands annually (this is just in our larger region!) so we had to rope in our neighbours at the Wellington and Wairarapa guilds and together we manage to just keep ahead of this demand. Some thanks are also deserved here; for John for getting us started on the bowls and for carrying it for the first years, and to Pauline & Graeme McIntyre for willingly carrying both projects on and now to Ian & Julie Pratt for picking up the baton.

That both of these charity events are worthwhile is evidenced by the cards and notes, with very personal stories, we get back from cancer patients, the ultimate recipients, who are touched to



*Leigh Renai receiving wig stands from us and Wellington*

think that someone thought to reach out to them at this difficult time in their lives. We have spoken to bowl recipients who are moved to tears and treasure the bowl for years to come. It is a small, simple,

gesture for us which can mean so much for someone in need of a kind thought. Thank you all for these wonderful efforts.

Recently Roy Miers and Ian Pratt made a dozen rocking chair/tables for kids with hip dislocation. We don't know if this too will become another regular, but if it does we are confident that our guys will step up and make it happen.

Long may these efforts continue.

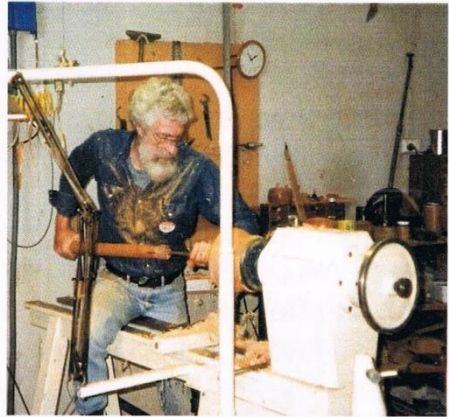


## CHEERS AND TEARS

### *Taking part in the woodturning world*

In April 1999 we had our first bus trip when 20 members enjoyed a day out visiting the Hutt Valley. Camerons & Hutt Valley Power Tools were followed by a sausage sizzle at Link Technology, then on to The Woodturning Shop and to Warren Kennedy's timber mill and workshop where we loaded up the luggage area (and quite a bit of the aisles!) with slabs and blanks.

Six members enjoyed a Tanner lathe demo at Brian McLennan's garage workshop and 10 of us went to Manawatu in October to watch David Ellsworth at work.



*David Ellsworth in full swing at Manawatu*

Our 'home groups' were formed at this early stage and initially they were just given numbers ( the number 1 group, the number 2 group etc.) but later the groups' names were changed to the Alec Brown group, the Torrance group, the Wednesday (TWS) group, the carving group, the Furniture group & the Village group. Later some of the Wednesday beginners group split off to become the Ratanui group leaving the beginners at TWS. Some informal groups, such as scrollsawers & toy makers also came & went. Some of those names remain today as a reminder of that early history and those who contributed so much to it.

In January 2001 we hosted a meeting with the Manawatu and Wellington guilds to explore any areas we could co-ordinate our efforts with events and demonstrations etc. Though nothing

formal came from this meeting, it did strengthen the relationships and intent with our neighbours and it is now almost taken as read that we all share in each others major events.

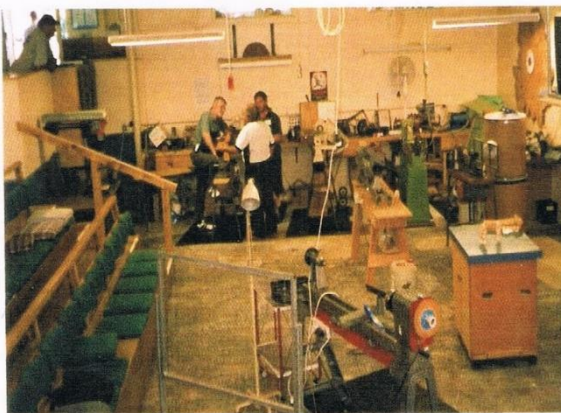
By 2002 we had a strong enough base of hard core turners that 9 members went up to the Turangi (now Taupo,) Jamboree. We were so solid there that we even had our own little corner, with banner proudly flying and our guys well respected. We continued this tradition after the jamboree shifted to Taupo, but have not participated so much in recent years.



*"Our" corner at Turangi Jamboree*

Also in 2002 we were 'Johnny on the spot' when Transit was removing Pohutukawa trees from the roadside at Paekakariki. We had let known our interest and fronted up with chainsaws and trailers doing a sterling job of timber removal.

In 2005 we organised another bus trip, including some wives, to visit the Hawkes Bay club for a turning and social visit, billeting with our hosts and looking with envy at their superb clubrooms. On the way home we visited a historic house at



*Visiting the Hawkes Bay Clubrooms*



Takapau. The following year we hosted a reciprocal visit from Hawkes Bay with a fun day of turning at TWS and dinner out. While we didn't win the great spinning top challenge which Hawkes Bay won with a quite messy effort in something like 36 seconds, ours, at just over 60 seconds was definitely prettier! In addition to these club efforts our members have also enjoyed , or should we say "worked hard for"? individual successes at Kawerau, Franklin, Putaruru, The Royal Easter Show, Taranaki & the South Pacific woodturning Symposium. Among that hard-core are Graeme McIntyre, Phil Qinn, Brian Arthurs, Jim Lowe, Russell Barnes & Tim Allsop.



*Coastlands Exhibition*



*2011winning table at Manawatu*

We might be a small club, but we can be very proud of what we have collectively and individually achieved over the last 20 years

Our small club has always punched way above our weight when it comes to competing out in the woodturning world. Our first couple of years at the Manawatu Open Day didn't bear fruit, but in 2000 we made a special effort and began a winning streak which does us proud.

Our wins include:

- **The Drew Cup** – *for best display table*  
2000 – 2002 – 2003 – 2005 – 2006 – 2009 – 2010 – 2011 & 2012.
- **The Wellington Trophy** – *For best non-turned item*  
Jim Lowe – 2011- 2015
- **The Colt Trophy** – *for the turning competition*  
2004 – 2009 – 2010 (shared equal with Wgtn) - 2012 & 2013
- **Champion Piece** - *Best Overall winner*  
Jim Lowe – 2011 - Brian Arthurs – 2012



*What a winning table at Manawatu looks like! 2010*



*Brian, Jim & Geoff at Manawatu*



## **ROLL OF HONOUR**

*The following is a list of office holders who have worked on behalf of your guild over the years.*

- **PRESIDENT**

John Simons (1997, 1998) Bruce Oliver ( 1999, 2000)  
Jim Lowe (2001, 2002, 2007) Graeme McIntyre ( 2003, 2004)  
Geoff Greenfield ( 2005, 2006, 2008)  
Don Hopkirk ( 'acting' 2009, 2010)  
Lewis Morrison ('acting' 2011, 2012) Russell Barnes ( 2013)  
John Debney (2014,2015) Derek Hemming ( 2016, 2017)

- **VICE PRESIDENT**

Bruce Oliver (1998) Jim Lowe (1999, 2000, 2005, 2006)  
John Eason (2001) Graeme McIntyre (2002)  
Geoff Greenfield (2003, 2004, 2012) Andrea Mark (2007)  
Lewis Morrison (2010) John Debney (2014)

- **SECRETARY**

Frank Torrence (1998) Neville Smith (1999)  
Steve Timperley (2000) Gillian van Raalte (2001, 2002)  
Phil Quinn (2003, 2004) Brian Arthurs (2005, 2006)  
Lewis Morrison (2005, 2006, 2007) Keith Bradbury (2008, 2009)  
Jim Lowe (2010, 2011) Tim Nicol (2012, 2013)  
Michael Gaffaney (2014) Tim Allsop (2015, 2016, 2017)

- **TREASURER**

Alan Watt (1998, 1999, 2000, 2004) Dave Rhode (2001, 2002, 2003) Lewis Morrison ( 2003) John Debney (2005)  
Pam Watt ( 2006, 2007, 2008 ) Russell Barnes (2009,2010  
2011, 2012, 2013) Clive Williams (2014,2015, 2016, 2017)

*(For various reasons, mostly health related, several people stepped up and served as "acting" exec. So some years 2 people served some posts.)*

Special thanks should also be recorded for two other groups, too numerous to list here, but who have given unstinting & invaluable service to the club over the years.

- To all committee members who have served, come and gone.
- To all willing workers doing library, teas, filming, demonstrations, talks, cleaning or mucking in & lifting and carrying and sizzling sausages at guild events.

You know who you all are and you have our gratitude.



*Brian Arthurs, Chris Jackson & Jim Lowe*

On this auspicious occasion it is worth mentioning the only three individuals who were inaugural members & who remain members today.

---

### **First Life Membership**

*A note taken from the minutes of the AGM of 14<sup>th</sup> May 2013:*

“Departure from the agenda; The President (Lewis Morrison) wished to take the opportunity to honour the support given to the guild by Mr Jim Lowe for his outstanding contributions in the field of training, exhibition management, his past office bearing appointments and his long term devotion to the welfare of the guild.

The President bestowed a LIFE MEMBERSHIP in recognition of his devotion to the wellbeing of the guild”.

And for once in his life, the normally talkative Mr Jim was speechless!!